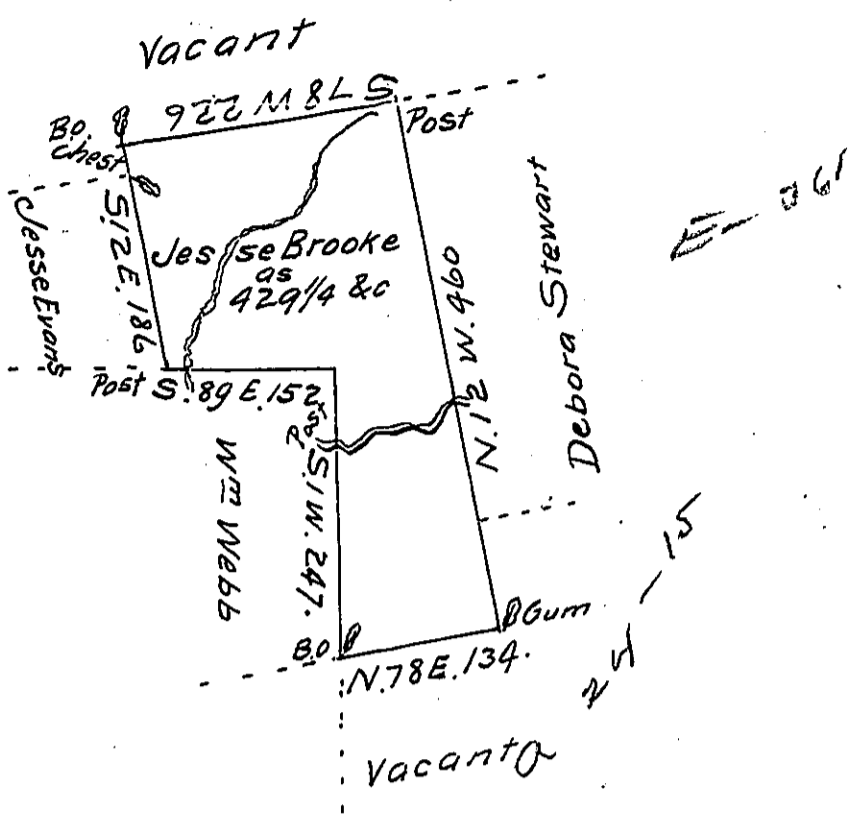


M-59



A Draft of a tract of Land called _____ situate ^{on Beaver Creek} in the County of Northumberland containing Four hundred & twenty nine acres $\frac{1}{4}$ & allow^e. Surveyed for Jesse Brooke the 10th day of August ¹⁷⁹³ by virtue of a warrant dated the 3^d day of Jan'y 1793.

by W^m Gray D.S.

To Daniel Brodhead Esq^r.
 }
 Surv^r. Gen^l. }

IN TESTIMONY that the above is a copy of the original remaining on file in the Department of Internal Affairs of Pennsylvania, made conformably to an Act of Assembly approved the 16th day of February, 1833, I have hereunto set my Hand and caused the Seal of said Department to be affixed at Harrisburg, this eleventh day of July 1911

Henry Howell
 Secretary of Internal Affairs.